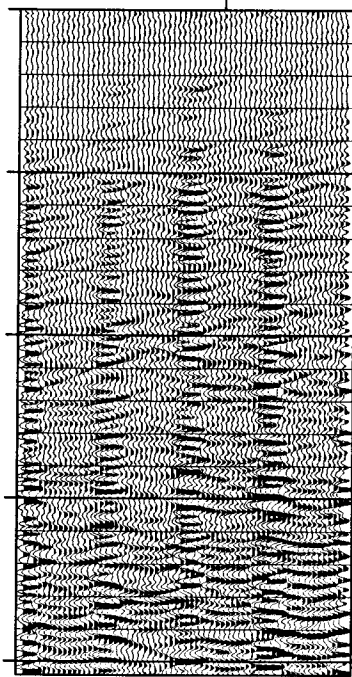
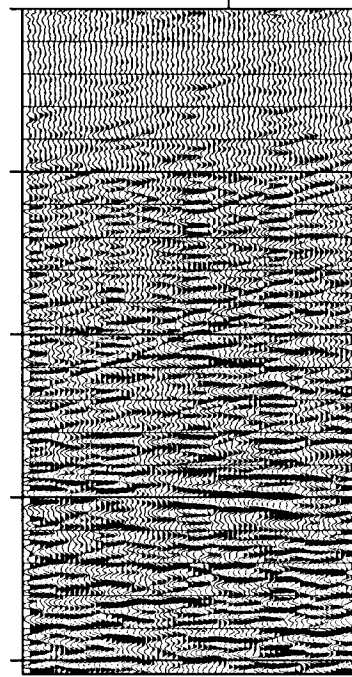


STANFORD EXPLORATION PROJECT

Report Number 44, October 1985



by
*Kamal Al-Yahya,
Biondo Biondi,
Jon Claerbout,
Joe Dellinger,
Paul Fowler,
Bill Harlan,
Clement Kostov,
Stew Levin,
Zhiming Li,
Francis Muir,
Shuki Ronen,
Dan Rothman,
Chuck Sword,
and
Marta Woodward.*



Copyright © 1985

by the Board of Trustees of the Leland Stanford Junior University

Stanford, California 94305

Copying permitted for all internal purposes of the Sponsors of
the Stanford Exploration Project

SEP-44 --- TABLE OF CONTENTS

Velocity Estimation

<i>Fowler, P.</i> Migration velocity analysis by optimization: linear theory.....	1
<i>Sword, C.</i> Tomographic determination of interval velocities from CDR data--preliminary results.....	21
<i>Rothman, D.</i> Velocity estimation by simulated annealing: problems and prospects.....	47

Anisotropy

<i>Muir, F. and Dellinger, J.</i> A practical anisotropic system	55
<i>Dellinger, J.</i> Two domains of anisotropy	59
<i>Dellinger, J.</i> Some anisotropic modeling examples.....	63
<i>Woodward, M. and Muir, F.</i> Anisotropic NMO removal.....	67

NMO and Stack

<i>Biondi, B. and Claerbout, J.</i> Pseudounitary NMO.....	75
<i>Harlan, W.</i> Robust velocity stacks	85

Deconvolution

<i>Kostov, C. and Claerbout, J.</i> Choice of parameters for t_r deconvolution.....	107
---	-----

Migration

<i>Li, Z.</i> A field-data example of applying LITWEQ migration.....	119
<i>Ronen, S.</i> Multi-channel inversion	133

Gain

<i>Levin, S.</i> Newton trace balancing II.....	145
---	-----

Conjugate Gradient Method

<i>Claerbout, J.</i> Conjugate gradients for beginners.....	161
<i>Claerbout, J.</i> Decomposition by conjugate gradients.....	167

Computer Topics

<i>Claerbout, J., Dellinger, J., Harlan, W., Levin, S., Ottolini, R. and Sword, C.</i> The Convex C-1 Computer.....	175
<i>Levin, S.</i> So you went and bought a vector computer.....	183
<i>Claerbout, J.</i> Fractals and color tables.....	199

Erratum

<i>Al-Yahya, K.</i> Borehole tomography: an erratum	207
---	-----

Five-year Index

Chronological cumulative contents to SEP report volumes 26 to 44.....	211
Cumulative permuted index of contents to SEP report volumes 26 to 44	217
Cumulative permuted index of authors in SEP report volumes 26 to 44.....	237
SEP Phone Directory	243
Research Personnel.....	245
Sponsors of the Stanford Exploration Project 1984-85	249