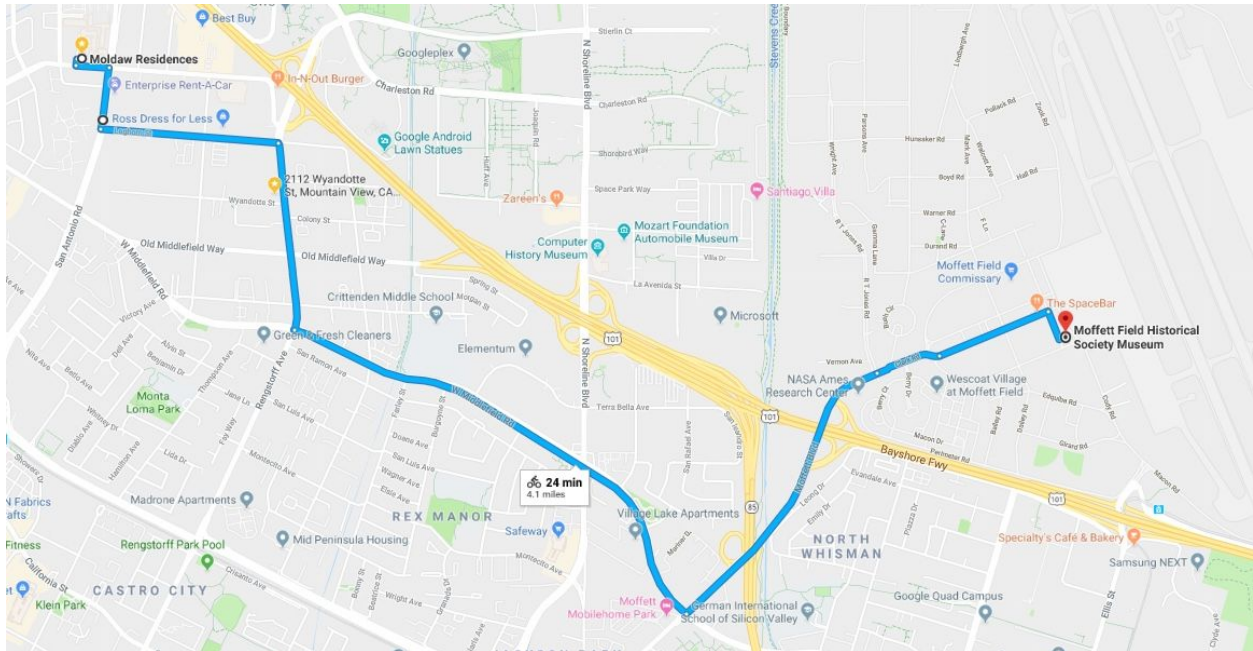


Biking to Moffett field from the north

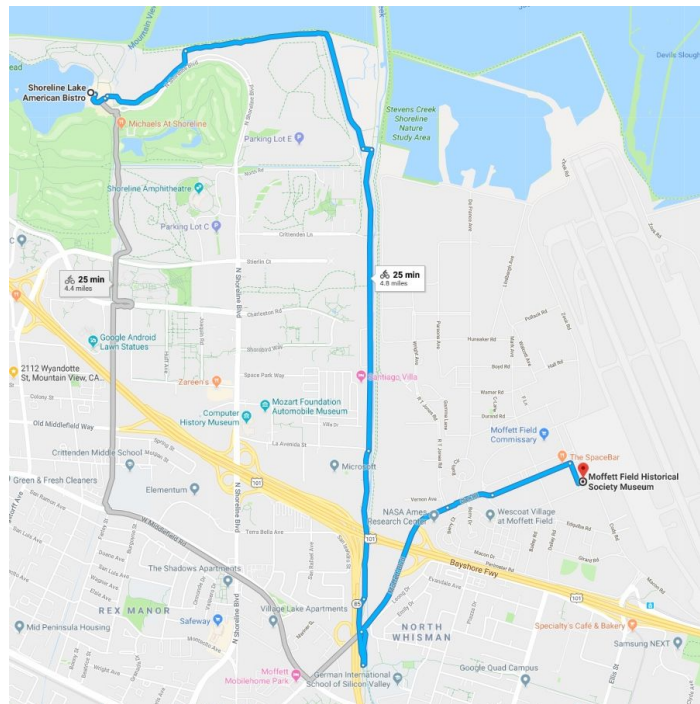
The automobile and bike route.

South on Middlefield Road to Moffett Blvd. Turn left. Drive until they ask to see your driver's license or passport.

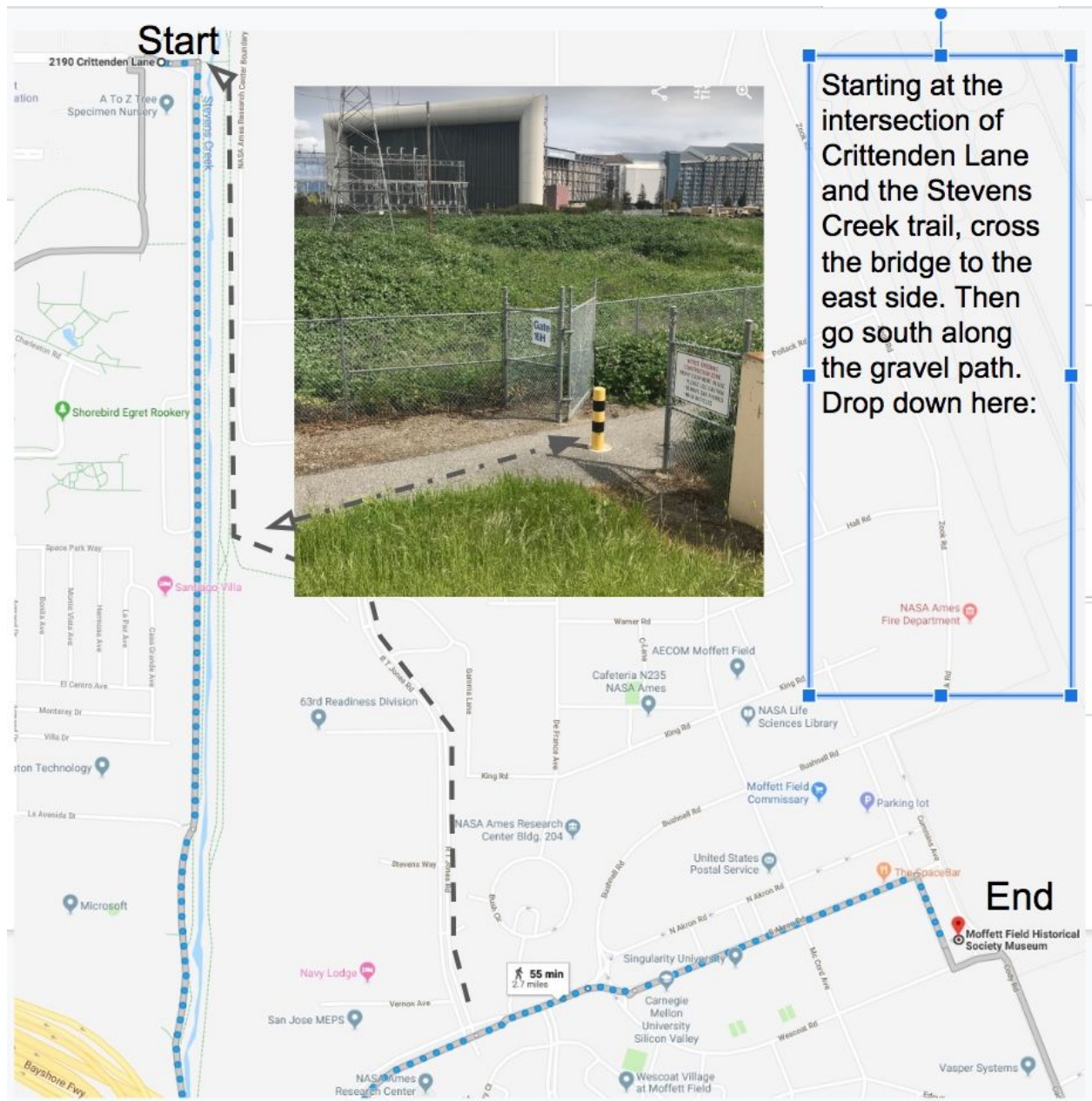


The all-pavement bike route

South down Steven's Creek trail until you see the Moffett turnout. Then north (left) on Moffett Blvd.



The shortest route is gravel along the east side of Steven's Creek.







One block northwest of the Museum find “The Space Bar” for hamburgers and beer. John called it the “Officers’ Club”.