

SEP articles published or in press, 1988-89

- Al-Yahya, K., 1989, Velocity analysis by profile migration: *Geophysics*, **54**, June.
- Biondi, B., and Kostov, C., 1989, High-resolution velocity spectra using eigenstructure methods: accepted for publication in *Geophysics*, **54**, July.
- Biondi, B., 1989, Migration velocity analysis using beam stacks: Abstracts of the EAEG.
- Biondi, B., and Kostov, C., 1988, High-resolution velocity spectra using eigenstructure methods: Expanded Abstracts of the SEG.
- Biondi, B., 1988, Interval velocity estimation from beam-stacked data: Expanded Abstracts of the SEG.
- Dellinger, J., and Etgen, J., 1989, Wavefield separation in 2-D anisotropic media: submitted to *Geophysics*.
- Dellinger, J., and Muir, F., 1988, Imaging reflections in elliptically anisotropic media: *Geophysics*, **53**, 1616.
- Harlan, W., 1988, Separation of signal and noise applied to vertical seismic profiles: *Geophysics*, **53**, 932.
- Kostov, C., 1989, Applications of adaptive lattice filters: Abstracts of the 1989 EAEG.
- Schoenberg, M., and Muir, F., 1989, Group theoretic formulation for elastic properties of media composed of anisotropic layers: in *Elastic Wave Propagation*, 259.
- Schoenberg, M., and Muir, F., 1989, A calculus for finely layered anisotropic media: *Geophysics* **54**, May.
- Toldi, J.L., 1989, Velocity analysis without picking: *Geophysics*, **54**, 191.
- Van Trier, J., 1988, Migration-velocity analysis using geological constraints: presented at the 58th Ann. Internat. Mtg., Soc. Expl. Geophys.
- Van Trier, J., 1989, Structural-velocity analysis using migrated seismic data: presented at the 51st Ann. Internat. Mtg., EAEG.
- Woodward, M.J., and Rocca, F., 1988, Wave-equation tomography: presented at the 58th Ann. Internat. Mtg., Soc. Expl. Geophys.; available as an SEG slide set.

SEP Phone Directory

Name	Phone	Login Name
Pat Bartz	(415)723-1703	pat
Jon Claerbout	723-3717	jon
Debbie Levoy	723-0683	debbie
Francis Muir	723-9390	francis
Rick Ottolini	723-1319	rick
Biondo Biondi	723-1250	biondo
Steve Cole	723-0253	steve
Carlos Cunha-Filho	723-4469	carlos
Gilles Darche	723-4469	gilles
Joe Dellinger	723-0463	joe
Jean Claude Dulac	723-0253	jean
John Etgen	723-1250	john
Josef Jedlicka	723-4469	josef
Martin Karrenbach	723-0253	martin
Clement Kostov	723-0463	clem
Dave Nichols	723-0253	dave
Alexandr Popovici	723-0253	mihai
Jos van Trier	723-1250	jos
Marta Woodward	723-0253	marta
Lin Zhang	723-0463	lin

COMPUTER PHONES

Our computer is connected to the ARPA net, the UNIX-UUCP net (usenet), and BITNET. We can receive computer mail via any of these nets. Our ARPA net address is hanauma.stanford.edu (i.e., send Fabio mail with the address fabio@hanauma). If your machine does not yet handle domain-based routing, your 'host table' should have the entry

```
36.51.0.16 hanauma.stanford.edu
```

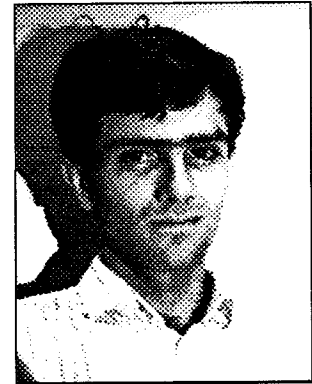
If you are on the UNIX-UUCP net, our address is "decvax!hanauma" (i.e., send Jon mail with the address "decvax!hanauma!jon". If you are on BITNET, send mail to "MAILER@STANFORD" and then as the first line of your message insert the line

```
To: user@hanauma
```

where "user" is the login name of the person you wish to send mail to on hanauma. Our 300/1200/2400 baud phone number is (415) 725-1335.

Research Personnel

Biondo L. Biondi received a B.S. degree in electrical engineering in 1984 from the Polytechnical School of Milano. In March 1985 he joined the SEP and is a Ph.D. candidate in geophysics at Stanford. During 1987 he has worked for six months as a researcher with TOTAL Compagnie Française des Pétroles in Paris. He is a student member of SEG and EAEG.



Jon F. Claerbout (M.I.T., B.S. physics, 1960, M.S. geophysics, 1963, Ph.D. geophysics, 1967) joined the geophysics faculty at Stanford University in 1967 and became a consultant to the Chevron Oil Field Research Company (1967-73). He received the Best Presentation Award from the Society of Exploration Geophysicists for his paper, *Extrapolation of Wave Fields*, and received the Society's Medal Award "in recognition of his outstanding and original pioneering work in seismic wave analysis." In 1973 he founded the Stanford Exploration Project (SEP). In 1977 he was elected a Fellow of the American Geophysical Union and in 1979 joined the MIT Corporation Advisory Committee to Earth Sciences. He published two books: *Fundamentals of Geophysical Data Processing*, in 1976, and *Imaging the Earth's Interior* in 1985. In 1985 he became an honorary member of the SEG and in 1988 he was elected to membership in the National Academy of Engineering.



Steve Cole received a B.S. degree in physics from M.I.T. in 1983. He spent three years with Western Geophysical in Houston as a research geophysicist. He joined the SEP in September of 1986 and is working toward a Ph.D. in geophysics. During 1988 and 1989 he spent five months doing research at TOTAL Compagnie Française des Pétroles in Paris. He is a member of SEG and EAEG.



Carlos A. Cunha received a B.S. in physics in 1979 and then worked as a teaching assistant while taking graduate courses at the Federal University of Rio de Janeiro until 1982. From 1982 to 1988 he worked as a geophysicist at the Seismic Processing Center at Petrobras, joining SEP in September 1988 to work toward a PhD in geophysics under a Petrobras scholarship.



Joe Dellinger received a B.S. degree in mathematics and another in geophysics from Texas A & M university in 1983. In 1986 he received an M.S. from Stanford in Geophysics, and he is now continuing toward a Ph.D. in geophysics as a member of SEP. His current research interests include irregular spatial sampling, inversion, improving data display, and anisotropy.



Jean-Claude Dulac graduated from the Ecole Nationale Supérieure de Géologie de Nancy (France) in 1986. In 1986 and 1987 he worked on a Geophysical and Geological integrated system at TOTAL Compagnie Française des Pétroles in Paris. He joined the SEP in February 1988 to work toward an M.S. in geophysics, under a TOTAL CFP scholarship.

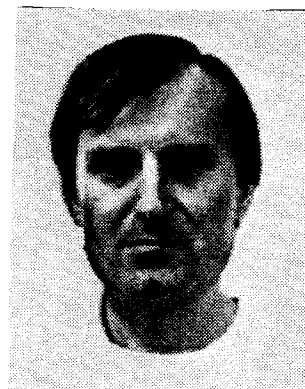


John Etgen received a B.S. in Geophysical Engineering from Colorado School of Mines in May 1985. During the summers of 1985 and 1986 he worked as a geophysicist for Amoco Production Company in Denver. He joined SEP in September of 1985 and is currently working toward a Ph.D. in geophysics. His work includes finite-difference and Kirchhoff prestack migration and velocity analysis. He is a member of SEG.

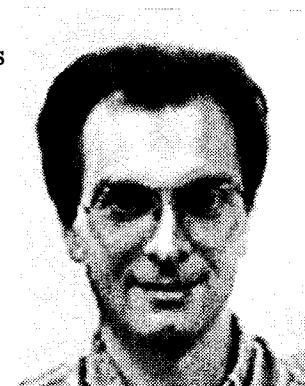


William Harlan first worked with the SEP in 1981. He received a B.S. in geophysics from Texas A & M University in 1981 under a scholarship from the SEG and received an M.S. and Ph.D. in geophysics from Stanford University in 1984 and 1986. While a student he worked short intervals as a seismic interpreter and researcher for Conoco, Inc. in Midland, Texas and in Ponca City, Oklahoma. He studied at l'Institut Francais du Petrole in Rueil-Malmaison, France during 1984. From early 1986 to late 1987 he worked with Qinghua University in Beijing and with the Petroleum Ministry in Zhuoxian, China as a research scientist. He has just completed one year as a research consultant with the Osservatorio Geofisico Sperimentale in Trieste, Italy.

Josef Jedlička received a B.S. degree in mathematics from the J.E.Purkyně University of Brno, Czechoslovakia, in 1974. From 1975 to 1988 he worked on seismic software development at Geofyzika in Brno. He joined SEP in September 1988 and is currently working toward an M.S. in geophysics.



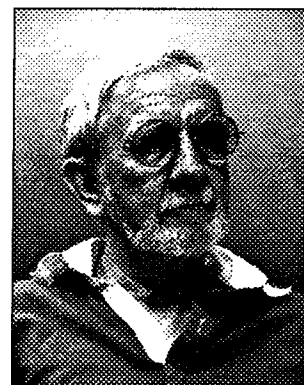
Martin Karrenbach received his "Vordiplom" in physics from University of Karlsruhe, West Germany, in 1985 and his M.S. in geophysics from the University of Houston in 1988. From 1984 to 1988 he had part time or summer jobs with CogniSeis, BEB, Siemens, and Prakla-Seismos. He joined the Stanford Exploration Project in September 1988 and is currently working towards a Ph.D. in geophysics. He is a member of SEG.



Clement Kostov graduated from the Ecole des Mines de Paris in 1983, then received an M.S. in Geostatistics from Stanford University and joined the SEP in July 1985. He has had summer jobs with Elf-Aquitaine, Sohio, and Schlumberger-Doll Research.



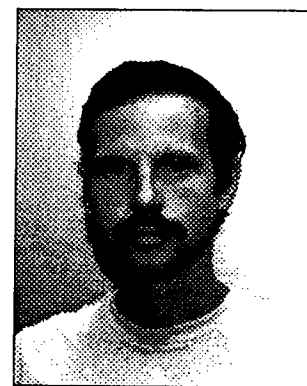
Francis Muir studied mathematics at Balliol College, Oxford, from 1943 to 1950. In 1954 he joined Seismograph Service Limited where he was employed in research and as a field geophysicist on reflection and refraction crews in the U.K., Algeria, Niger, Nigeria, Papua and Australia. He joined West Australian Petroleum in 1962 as a field supervisor and staff geophysicist, and transferred to Chevron Oil Field Research Company in 1967, where he was senior research associate at the time of his leaving Chevron at the end of 1983. Francis was a consulting professor at Stanford for two quarters in 1978, a further quarter in 1981, and was reappointed to that position in January of 1984. Since July 1984 he has continued the appointment on a part-time basis and, in addition, consults with industry, particularly on applications of velocity anisotropy to oilfield development.



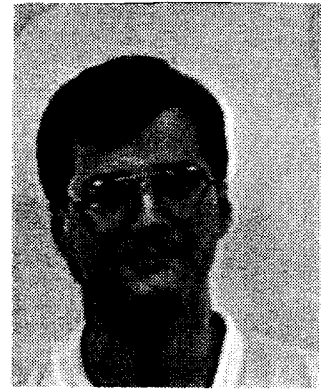
Dave Nichols received his B.A. in physics from Cambridge University in 1982 and his M.Sc. in Geophysics from Imperial College, London in 1983. From 1983-87 he was employed by Western Geophysical in London. He joined SEP in 1987 and is currently working toward a Ph.D. in geophysics. He is a member of SEG and EAEG.



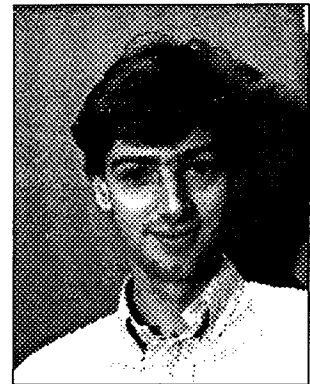
Rick Ottolini is currently an Acting Assistant Professor in the Department of Geophysics working with the SEP. He received a Ph.D. from Stanford in 1983 with the thesis "Migration in Midpoint-Angle Coordinates" (SEP-33). He is interested in seismic imaging and data interpretation aids.



Alexander M. Popovici (University of Bucharest, Romania, equivalent B.S. in Geophysics, 1986), joined the SEP in September of 1988 and is working toward a Ph.D. in geophysics. From 1987 to 1988 he worked as a software engineer for Guzik Technical. He is a member of SEG.



Jos van Trier received his B.S. in physics in 1982 and his M.S. in geophysics in 1985 from the University of Utrecht, the Netherlands. He joined the SEP in September 1985 and is currently working toward a Ph.D. in geophysics at Stanford. He worked as a research geophysicist for Shell Research in Rijswijk, the Netherlands during the summer of 1987.



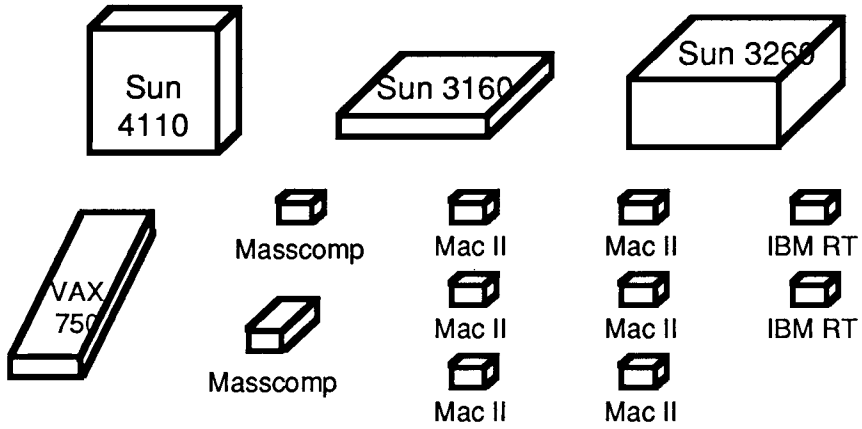
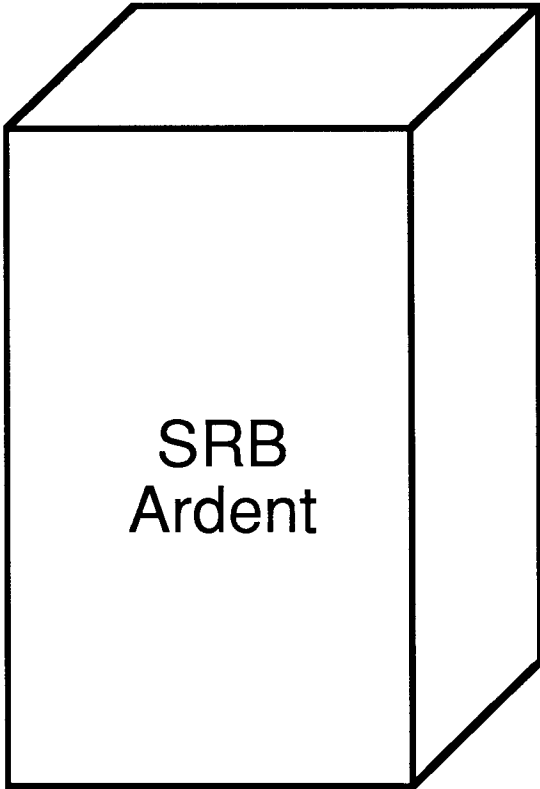
Marta Jo Woodward received a B.A. in chemistry from the University of California at San Diego in 1974 and an M.B.A. from the University of Santa Clara in 1981. From 1978 through 1982 she worked for the U.S. Geological Survey in Menlo Park. Marta joined the SEP in September 1983 and is currently working toward a Ph.D. in geophysics. During the summer of 1984 she worked for Chevron U.S.A. in Concord, CA.



Lin Zhang received a B.S. in electrical engineering from Xi'an Jiaotong University in 1982. From 1983 to 1985 he worked as a teaching assistant in the same university. In 1986 he received an M.S in electrical engineering from California Institute of Technology and worked on multichannel information theory. He joined SEP in 1987 and is currently working toward a Ph.D. in geophysics.



NON-SEP STANFORD GEOPHYSICS COMPUTERS 4/89



**SPONSORS OF THE STANFORD EXPLORATION PROJECT,
1988-89**

AGIP S.p.A.

+Ing. G. Bolondi
STRA
P.O. Box 12069
20120 Milan
Italy
(02) 5201

Amerada Hess Corp.

+J. Bee Bednar
P.O. Box 2040
Tulsa, Oklahoma 74102
(918) 599-4788

Amoco Production Co.

+K.R. Kelly
P.O. Box 3385
Tulsa, Oklahoma 74102
(918) 660-3828

Aramco Overseas Co.

+Alan Cook
Geophysical Department
Research and Development Div.
X-3480
Dhahran, 31311, Saudi Arabia

ARCO Oil and Gas Co.

+*N.L. Carayannopoulos
Research and Technical Services
2300 West Plano Parkway
Plano, Texas 75075
(214) 754-6941

**BP Petroleum Development
Ltd.**

+Andrew L. Lucas
Geophysical Research and Techni-
cal Services
Britannic House, Moor Lane
London EC2Y 9BU
England
(01) 920 8000

**Beijing Computer Center of
the Ministry of Geology
and Mineral Resources**

+Huang Xude
31 Xue Yuan Road, Haidian
Beijing, China
466031-306

CGG American Services

+*Henry Brysk
2500 Wilcrest
Suite 200
Houston, Texas 77042
(713) 784-0740

**Chevron Oil Field Research
Co.**

+Ray Ergas
* John Toldi
P.O. Box 446
La Habra, California 90631
(213) 694-9490

+ Project Contact

* Member of Steering Committee

Chinese Petroleum Corp.

+Y.T. Lee
83 Chung Hwa Road
Taipei, Taiwan
China
(02) 361 0221

CogniSeis Development Inc.

+Lee Lu
2401 Portsmouth
Houston, Texas 77098
(713) 526-3273

Conoco Inc.

+*Richard Day, 1988-89 Steering
Committee Chairman
P.O. Box 1267
Ponca City, Oklahoma 74603
(405) 767-2046

Cray Research

+William Kamp
1333 Northland Drive
Mendota Heights, Minnesota
55120
(612) 681-3665

Digicon Geophysical Corp.

+Edward R. Prince, Jr.
3701 Kirby Drive
Houston, Texas 77098
(713) 526-5611

**Exxon Production Research
Co.**

+Young C. Kim
P.O. Box 2189
Houston, Texas 77252-2189
(713) 965-4576

GECO

+Lars Sonneland
Bjergstedvn. 1
P.O. Box 330
N-4001 Stavanger
Norway
(04) 50 65 50

**Geophysical Development
Corp.**

+John Sherwood
8401 Westheimer, Suite 150
Houston, Texas 77063
(713) 782-1234

**Geophysical Prospecting Bu-
reau**

+Xu Dakun
Petroleum Ministry
P.O. Box 11-3
Zhuoxian County
Hebei Province
People's Republic of China

**Halliburton Geophysical Ser-
vices, Inc.**

+Laurent J. Meister
MS 3966
Cam Wason
P.O. Box 655621
Dallas, Texas 75265
(214) 995-7607

Husky Oil Operations Ltd.

+*D. Ganley
707 - 8th Avenue S.W.
Calgary, Alberta
Canada T2P 3G7
(403) 298-7603

IBM

+Jeno Gazdag
Palo Alto Scientific Center
1530 Page Mill Road
P.O. Box 10500
Palo Alto, California 94304
(415) 855-4145

Institut Francais du Petrole

+Gerard Grau
 B.P. 311
 92506 Rueil Malmaison Cedex
 France
 33 (1) 47 52 65 38

**Japex Geoscience Institute,
 Inc.**

+Takeshi Ikawa
 Akasaka Twin Tower
 East Wing, 3rd Floor
 2-17-22, Akasaka, Minato-ku
 Tokyo, 107
 Japan
 (03) 584 0511

**Koninklijke/Shell Exploratie
 en Produktie Laborato-
 rium**

+Head of LRE/5; ATTN: H. Tan
 Postbus 60, 2280AB
 Rijswijk Z-H
 The Netherlands
 (070) 11 2744

**Mobil Research and Develop-
 ment Corp.**

+S.J. Laster
 Stewart Levin
 13777 Midway Road
 Dallas, Texas 75244-4312
 (214) 851-8616

Norsk Hydro A.S.

+Eivind Rygg
 P.O. Box 4313
 N-5013 Nygardstangen
 Lars Hillesgt. 30
 Bergen, Norway
 (05) 21 60 00

Prakla-Seismos AG

+Dietrich Ristow
 Buchholzer Strasse 100
 P.O. Box 510530
 D 3000 Hannover 51
 West Germany
 0511 642-0

**Schlumberger Technology
 Corp.**

+Philip A.F. Christie
 Douglas Miller
 Schlumberger-Doll Research
 Old Quarry Road
 Ridgefield, Connecticut 06877-
 4108
 (203) 431-5000

Seismograph Service Corp.

+Dale Stone
 P.O. Box 1590
 Tulsa, Oklahoma 74102
 (918) 627-3330

**Societe Nationale Elf
 Aquitaine (P)**

+Pierre Kolb
 Marc Verprat
 CSTCS avenue Larribau
 64018 Pau Cedex
 France
 33 59 83 67 40

**Spectrum Energy and Infor-
 mation Technology Ltd.**

+*Christopher Page
 56 Spectrum House
 Goldsworth Road
 Woking, Surrey GU21 1LQ
 United Kingdom
 04862 30201

Statoil

+Ole E. Naess
 Den norske stats oljeselskap a.s.
 Postboks 300
 N-4001 Stavanger
 Norway
 (04) 57 70 00

Sun Exploration and Production Co.

+Joong H. Chun
 Charles Barron
 Technology Center
 18325 Waterview
 Dallas, Texas 75252
 (214) 470-1912

Sun Microsystems, Inc.

+Ronald Uchida
 2550 Garcia Avenue
 MS No. 10-15
 Mountain View, California 94043
 (415) 336-4439

Teledyne Exploration

+Kevin M. Barry
 5825 Chimney Rock Road
 P.O. Box 36269
 Houston, TX 77236-6269
 (713) 666-2561

Texaco Inc.

+Youngsun Shin
 E and P Technology Division
 P.O. Box 770070
 Houston, Texas 77215-0070
 (713) 954-6000

Thinking Machines Corp.

+Rolf Fiebrich
 245 First Street
 Cambridge, MA 02142-1214
 (617) 876-1111

TOTAL (Compagnie Francaise des Petroles)

+J.J. Raoult
 Cedex 47
 92069 Paris la Defense
 France
 33 (1) 42 91 40 00

Unocal Corp.

+Fred Aminzadeh
 W. B. Lee
 376 South Valencia Avenue
 P. O. Box 76
 Brea, California 92621
 (714) 528-7201

U.S. Geological Survey

+Dennis Mann
 MS 999
 345 Middlefield Road
 Menlo Park, California 94025
 (415) 354-3174

Western Atlas International

+Wendell Wiggins
 Western Research Division
 3600 Briarpark Drive
 P. O. Box 2469
 Houston, Texas 77252-2469
 (713) 974-3194
 * Oz Yilmaz
 Western Research
 Wesgeco House, P.O. Box 18
 455 London Road, Isleworth
 Middlesex, TW7 5AB
 England