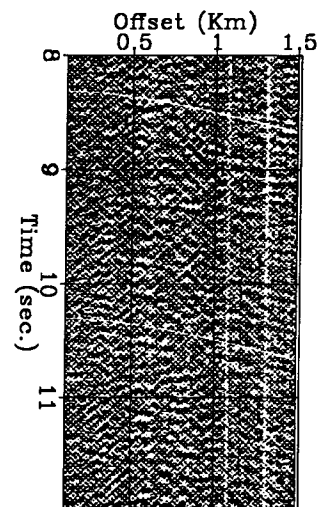
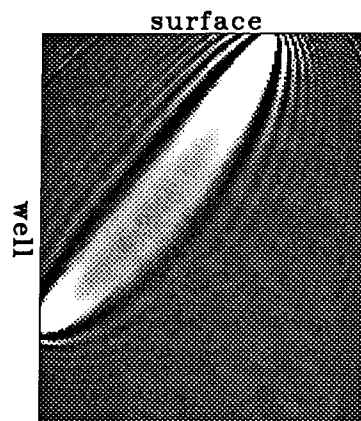
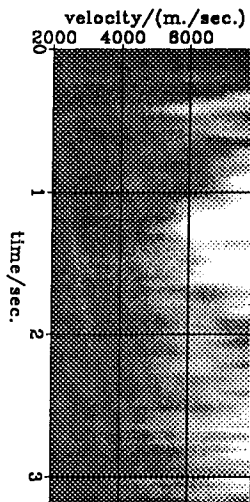


STANFORD EXPLORATION PROJECT

*Biondo Biondi, Jon Claerbout, Steve Cole, Carlos Cunha-Filho,
 Joe Dellinger, Jean Claude Dulac, John Etgen, William Harlan,
 Josef Jedlicka, Martin Karrenbach, Clement Kostov, Francis Muir,
 Dave Nichols, Rick Ottolini, Mihai Popovici, Jos van Trier,
 Marta Woodward and Lin Zhang*

Report Number 60, May 1989



Copyright ©1989

by the Board of Trustees of the Leland Stanford Junior University

Stanford, California 94305

*Copying permitted for all internal purposes of the Sponsors of
Stanford Exploration Project*

SEP-60 — TABLE OF CONTENTS

Velocity inversion

<i>Biondi, B.</i> , Interval velocity estimation from beam-stacked data — 2-D estimation results	1
<i>Etgen, J.T.</i> , Velocity analysis using prestack depth migration: applying the linear theory	25
<i>Van Trier, J.</i> , Structural-velocity analysis using migrated seismic data	41

Passive seismic experiments

<i>Nichols, D., Cole, S., and Zhang, L.</i> , An introduction to the SEP passive seismic dataset	67
<i>Nichols, D.</i> , 3-D slant stacks and elliptical moveout of passive seismic data	77
<i>Zhang, L.</i> , Reflectivity estimation from passive seismic data	85
<i>Cole, S.</i> , Downward continuation analysis of passive seismic data	97
<i>Kostov, C.</i> , Seismic reflection experiment with a drill-bit source	109

Migration and modeling

<i>Etgen, J.T.</i> , Accurate wave equation modeling	131
<i>Cole, S.</i> , Iterative methods for 3-D finite-difference migration and modeling	149

Velocity uncertainty

<i>Jedlička, J.</i> , Stochastic normal moveout correction	165
<i>Zhang, L.</i> , Migration under velocity uncertainty	179
<i>Dulac, J.C.</i> , Interactive velocity analysis exercises	187

Tomography

<i>Woodward, M.J.</i> , A qualitative comparison of the first-order Born and Rytov approximations	203
<i>Harlan, W.S.</i> , The tomographic estimation of seismic velocities from reflected ray-paths	215

<i>Woodward, M.J.</i> , Bandlimited raypaths: an example	229
--	-----

Elastic waves

<i>Karrenbach, M., and Muir, F.</i> , Turning multi-component data into tensor fields .	235
<i>Cunha Filho, C.A.</i> , Energy partition on marine converted waves	243

Anisotropy

<i>Dellinger, J.</i> , Anisotropic travel-time inversion with error bars: theory	253
<i>Nichols, D.</i> , A comparison of two models for the elastic properties of fractured rock	261
<i>Karrenbach, M.</i> , Velocity and Q in transverse isotropic media	271

Rock models

<i>Zhang, L.</i> , Simulate fluid flow in porous media with a probabilistic lattice gas ...	285
<i>Popovici, A.M., and Muir, F.</i> , Modeling anisotropic porous rocks	295

Review and tutorial

<i>Claerbout, J.F.</i> , Book3 or revised parts of FGDP	303
---	-----

Computer graphics

<i>Cole, S., and Dellinger, J.</i> , Vplot: SEP's plot language	349
<i>Claerbout, J.F.</i> , Interface for system independent plotting	391
<i>Ottolini, R.</i> , Interactive slant stacking	413
<i>Ottolini, R.</i> , What's NeXT?: Interactive seismic graphics applications on a NeXT workstation	419
<i>Ottolini, R.</i> , Three dimensional visualization of geophysical datasets	433
SEP articles published or in press, 1988-89	455
SEP phone directory	456
Research personnel	457
Sponsors of the SEP 1988-89	465