

SEP articles published or in press, 1987-88

REFERENCES

- Kostov, C., and Biondi, B., 1987, Improved resolution of slant stacks using beam stacks: New Orleans 57th SEG Meeting (SEP-51, pp. 343-350).
- Levin, S.A., 1987, Surface-consistent deconvolution: submitted to Geophysics (SEP-54, chap. 2).
- Levin, S.A., 1987, Seafloor-consistent suppression of multiples: submitted to Geophysics (SEP-54, chap. 3).
- Mora, P., 1987, Wavefield inversion and diffraction tomography repaired: New Orleans 57th SEG Meeting; (SEP-52).

SEP Phone Directory

Name	Phone	Login name
Pat Bartz	(415) 723-1703	pat
Francis Muir	723-9390	francis
Rick Ottolini	723-1319	rick
Fabio Rocca	723-3717	fabio
Steve Cole	723-0253	steve
Joe Dellinger	723-0463	joe
John Etgen	723-0253	john
Paul Fowler	723-0253	paul
Jean-Luc Guiziou	723-1250	jean
Niki Serakiotou	723-1319	niki
Chuck Sword	723-1319	chuck
Marta Woodward	723-0253	marta

COMPUTER PHONES

Our computer is connected to the ARPA net, the UNIX-UUCP net (usenet), and BITNET. We can receive computer mail via any of these nets. Our ARPA net address is hanauma.stanford.edu (i.e., send Fabio mail with the address fabio@hanauma.stanford.edu). If your machine does not yet handle domain-based routing, your 'host table' should have the entry

36.51.0.16 hanauma.stanford.edu

If you are on the UNIX-UUCP net, our address is "decvax!hanauma" (i.e., send Fabio mail with the address "decvax!hanauma!fabio"). If you are on BITNET, send mail to "MAILER@STANFORD" and then as the first line of your message insert the line

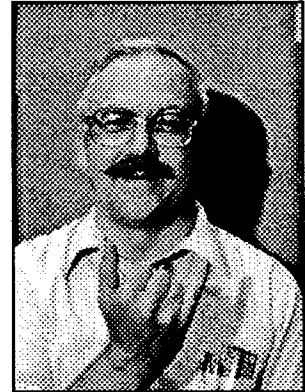
To: user@hanauma

where "user" is the login name of the person you wish to send mail to on hanauma.

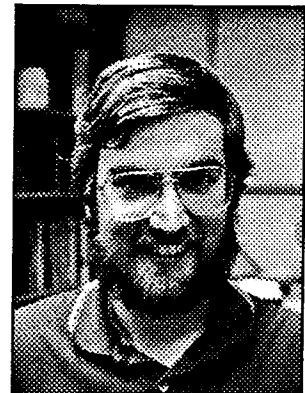
Our 300/1200/2400 baud phone number is (415) 725-1335.

RESEARCH PERSONNEL

Jon F. Claerbout (M.I.T., B.S. physics, 1960, M.S. geophysics, 1963, Ph.D. geophysics, 1967) joined the geophysics faculty at Stanford University in 1967 and became a consultant to the Chevron Oil Field Research Company (1967-73). On leave in 1972-73, he was a visiting research geologist at Princeton University and a visiting lecturer at Sydney University. In 1973 he founded the Stanford Exploration Project (SEP). In 1977 he was elected a Fellow of the American Geophysical Union and in 1979 joined the MIT Corporation Advisory Committee to Earth Sciences. Professor Claerbout received the Best Presentation Award from the Society of Exploration Geophysicists for his paper, *Extrapolation of Wave Fields*, and received the Society's Medal Award "in recognition of his outstanding and original pioneering work in seismic wave analysis." His first textbook *Fundamentals of Geophysical Data Processing*, published in 1976, was translated to Chinese (1979) and Russian (1981). During a 1979-80 sabbatical at Cambridge University he wrote a second book *Imaging the Earth's Interior*. In 1985 he became an honorary member of the SEG.



Steve Cole received a B.S. degree in physics from M.I.T. in 1983. He spent three years with Western Geophysical in Houston as a research geophysicist. He joined the SEP in September of 1986 and is working toward a Ph.D. in geophysics.



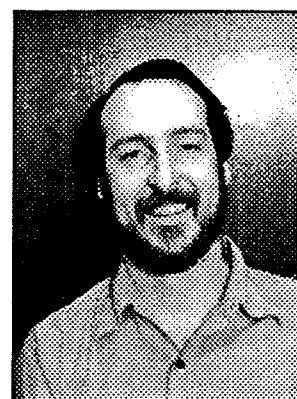
Joe Dellinger received a B.S. degree in mathematics and another in geophysics from Texas A & M university in 1983. In 1986 he received an M.S. from Stanford in Geophysics, and he is now continuing toward a Ph.D. in geophysics as a member of SEP. His current research interests include processing of data recorded with irregular spatial sampling, and anisotropy.



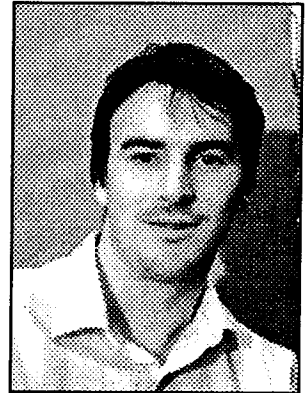
John Etgen received a B.S. in Geophysical Engineering from Colorado School of Mines in May 1985. During the summers of 1985 and 1986 he worked as a geophysicist for Amoco Production Company in Denver. He joined SEP in September of 1985 and is currently working toward a Ph.D. in geophysics. His work includes finite-difference and Kirchhoff prestack migration and velocity analysis. He is a member of SEG.



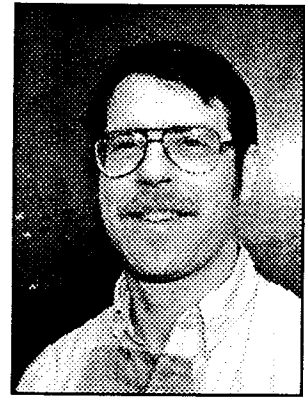
Paul Fowler received a B.S. in mathematics and geology from Portland State University in 1981 and an M.S. in geophysics from Stanford in 1984. He worked as a seismologist for the U.S. Army Corps of Engineers during 1982, and as a research geophysicist for Merlin Geophysical in Woking, England during the summer of 1984. He joined SEP in 1982 and is currently working toward a Ph.D. in geophysics. He is a member of SEG, EAEG, AGU, and SSA, and has been the recipient of an NSF graduate fellowship.



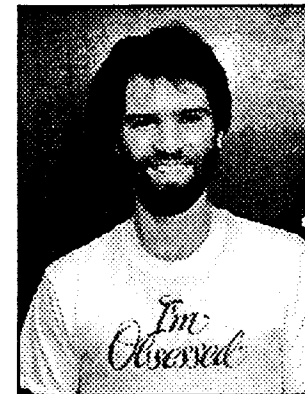
Jean-Luc Guiziou graduated from the Ecole Nationale Supérieure de Géologie de Nancy (France) in 1985. In 1985 and 1986 he worked as a Research Geophysicist at TOTAL Compagnie Française des Pétroles in Paris. He joined the SEP in February 1987 to work toward an M.S. in geophysics, under a TOTAL CFP scholarship.



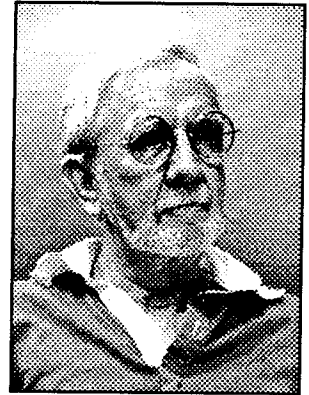
Stewart A. Levin received a B.A. in Mathematics from Princeton in 1975 and an M.S. in Mathematics in 1978 from Stanford. From 1979-1982 he worked at Western Geophysical, Houston, as a Senior Research Geophysicist. He joined the SEP in September 1982 and graduated in September 1987, going to work for Mobil's Dallas Research Lab.



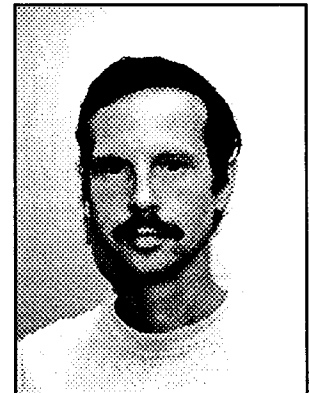
Peter Mora received a B.Sc. in geophysics (1978) and a B.Sc. Honours degree (1979) from the University of Adelaide, Australia. His honours thesis involved 2D ray tracing to study moveout functions and interval velocities. He worked for Esso Australia as a geophysicist and programmer and later consulted to Delhi Petroleum developing forward modeling software including ray tracing and finite difference schemes. In September 1982 he started a Ph.D. in geophysics at Stanford. From February to September 1985 he worked as a researcher at l'Institut de Physique du Globe in Paris. Pete's dissertation, "Elastic Wavefield Inversion", was published July 1987 as SEP-52.



Francis Muir studied mathematics at Balliol College, Oxford, from 1943 to 1950. In 1954 he joined Seismograph Service Limited where he was employed in research and as a field geophysicist on reflection and refraction crews in the U.K., Algeria, Niger, Nigeria, Papua and Australia. He joined West Australian Petroleum in 1962 as a field supervisor and staff geophysicist, and transferred to Chevron Oil Field Research Company in 1967, where he was senior research associate at the time of his leaving Chevron at the end of 1983. Francis was a consulting professor at Stanford for two quarters in 1978, a further quarter in 1981, and was reappointed to that position in January of 1984. Since July 1984 he has continued the appointment on a part-time basis and, in addition, consults with industry, particularly on applications of velocity anisotropy to oilfield development.



Rick Ottolini is currently an Acting Assistant Professor in the Department of Geophysics, working with the SEP and consulting in computer science. He received a Ph.D. from Stanford in 1983 with the thesis "Migration in Midpoint-Angle Coordinates" (SEP-33). He is interested in seismic imaging and data interpretation aids. His principal interest is bringing frontier hardware and software computing to SEP (super-computing, graphics, networks, user-interfaces, A.I.).



Fabio Rocca received the degree (cum laude) of “Dot-tore in Ingegneria Elettronica” from the Polytechnical School of Milano in 1962. Since then he has been in the Department of Electronic Engineering at that school, first as Teaching Assistant (1963), then as Associate Professor (1967) and then Full Professor of Radiotechniques (1975) and now Digital Signal Processing. He was Department Head (1975-1978) and then on the University Board of Regents (1980-today). He was President of the Osserratorio Geofisico Sperimentale (1983-1984).



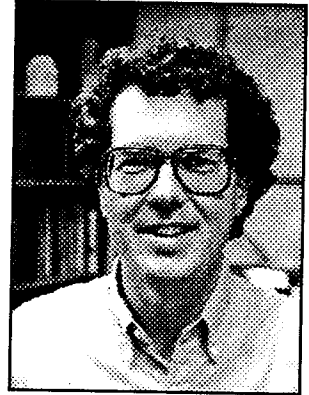
He was Associate Editor of Geophysical Prospecting from 1981 - 1985 and is a past President of the European Association of Exploration Geophysicists. He has consulted with AGIP, the Italian National Oil Company from 1968 to 1983.

Professor Rocca holds three patents. His research activities are digital signal processing for seismics, television, biomedicine, and recently Synthetic Aperture Radar. He has published more than 85 papers.

Niki Serakiotou received a B.S. degree from National Technical University of Athens, Greece, in 1985 and an M.S. from Princeton in 1986, both in Electrical Engineering. She joined SEP in February 1986 and is a member of SEG and IEEE.



Chuck Sword received a B.S. in physics from Stanford University in 1980. That summer he worked at Marathon Oil Company's Denver Research Center. He joined the SEP in September 1980. During the summer of 1982 he worked at Chevron Oil Field Research in La Habra. In 1983 he received a M.S. degree in geophysics from Stanford. For nine months in 1983-84 he studied at the Gubkin Institute of Petrochemical and Gas Industry in Moscow. He recently won the Best Student Paper Award, Seismology Section, 1986 San Francisco AGU meeting, for his paper on modeling global surface waves (see SEP-50). Chuck is currently working towards his Ph.D. in geophysics; he is studying the determination of interval velocities by tomographic methods. He is a member of SEG, EAEG, and AGU.



Marta Jo Woodward received a B.A. in chemistry from the University of California at San Diego in 1974 and an M.B.A. from the University of Santa Clara in 1981. From 1978 through 1982 she worked for the U.S. Geological Survey in Menlo Park. Marta joined the SEP in September 1983 and is currently working toward a Ph.D. in geophysics. During the summer of 1984 she worked for Chevron U.S.A. in Concord, CA.



Sponsors of the Stanford Exploration Project 1986-87

AGIP S.p.A.

+Ing. G. Bolondi
STRA
P.O. Box 12069
20120 Milan
Italy
(02) 5201

Amerada Hess Corp.

+J. Bee Bednar
P.O. Box 2040
Tulsa, Oklahoma 74102
(918) 599-4788

Amoco Production Co.

+K.R. Kelly
P.O. Box 3385
Tulsa, Oklahoma 74102
(918) 660-3000

Aramco

+Alan Cook
Geophysical Department
Research & Development Div.
X-3480
Dhahran, 31311, Saudi Arabia

ARCO Oil and Gas Company

+*N.L. Carayannopoulos
Research and Technical Services
2300 West Plano Parkway
Plano, Texas 75075
(214) 754-6941

BP Petroleum Development Ltd.

+S.M. Deregowski
Geophysics Division
Britannic House
Moor Lane
London EC2Y 9BU
England
(01) 920 8000

Beijing Computer Center of the Ministry of Geology and Mineral Resources

+Huang Xude
31 Xue Yuan Road, Haidian
Beijing, China
466031-306

Canterra Energy Ltd.

+*D. Ganley
P.O. Box 1051
Calgary, Alberta
Canada T2P 2K7
(403) 267-9216

CGG American Services

+*Henry Brysk, 1987-88 Steering
Committee Chairman
2500 Wilcrest
Suite 200
Houston, Texas 77042
(713) 784-0740

Chevron Oil Field Research Co.

+*I. David Hale
Dushan B. Jovanovich
P.O. Box 446
La Habra, California 90631
(213) 694-9351

+Project Contact

*Members of Steering Committee

Chinese Petroleum Corp.

+Y.T. Lee
83 Chung Hwa Road
Taipei, Taiwan
China
(02) 361 0221

Cities Service Oil & Gas Corp.

+Gary Latham
P.O. Box 300
Tulsa, Oklahoma 74102
(918) 561-2129

CogniSeis Development Inc.

+Lee Lu
2401 Portsmouth
Houston, Texas 77098
(713) 630-4174

Conoco Inc.

+Richard Day
Steve Hill
P.O. Box 1267
Ponca City, Oklahoma 74601
(405) 767-2046

Digicon Geophysical Corp.

+Rudy Prince
3701 Kirby Drive
Houston, Texas 77098
(713) 526-5611

Dome Petroleum Ltd.

+Phil Aldred
Paul Parsneau
P.O. Box 200
Calgary, Alberta
Canada T2P 2H8
(403) 234-4931

Exxon Production Research Co.

+*Young C. Kim
P.O. Box 2189
Houston, Texas 77001
(713) 965-4576

GECO

+Lars Sonneland
Bjergstedvn. 1 - P. O. Box 330
N-4001 Stavanger
Norway
(04) 50 65 50

Geophysical Development Corp.

+John Sherwood
8401 Westheimer, Suite 150
Houston, Texas 77063
(713) 782-1234

Geophysical Prospecting Bureau

+Xu Dakun
*Liu Songwei
Petroleum Ministry
P.O. Box 11-3
Zhuoxian County
Hebei Province
People's Republic of China

Geophysical Service Inc.

*+Laurent J. Meister
MS 3966
Cam Wason
P.O. Box 655621
Dallas, Texas 75265
(214) 995-7607

Geosource Inc.

+Alfonso Gonzalez-Serrano
Petty-Ray Geophysical
6909 Southwest Freeway
P.O. Box 36306
Houston, Texas 77036
(713) 871-6591

IBM

+Jeno Gazdag
Palo Alto Scientific Center
1530 Page Mill Road
P.O. Box 10500
Palo Alto, California 94304
(415) 855-3145

Japex Geoscience Institute, Inc.

+Takeshi Ikawa
Akasaka Twin Tower
East Wing, 3rd Floor
2-17-22, Akasaka, Minato-ku
Tokyo, 107
Japan
(03) 584 0511

**Koninklijke/Shell Exploratie
en Produktie Laboratorium**

+Piet H.A. Gerritsma
A.B. Kalden
Postbus 60, 2280AB
Rijswijk Z-H
The Netherlands
(070) 11 2744

Marathon Oil Co.

+R.S. McKnight
P.O. Box 269
Littleton, Colorado 80160
(303) 794-2601

Merlin Geophysical (Research) Ltd.

+C.D.T. Walker
Duke House, 1 Duke Street
Woking, GU21 5BA
Surrey, England
4862 23321

Mobil Research & Development Corp.

+S.J. Laster
13777 Midway Road
Dallas, Texas 75234
(214) 851-8616

Norsk Hydro A.S.

+Eivind Rygg
P.O. Box 4313
N-5013 Nygårdstangen
Lars Hillesgt. 30
Bergen, Norway
47 (5) 216000

Prakla-Seismos GmbH

+Dietrich Ristow
Buchholzer Str. 100
P.O. Box 510530
D-3000 Hannover 51
West Germany
0511 642-0

**Public Petroleum Corp.
of Greece-EKY SA**

+Takis Tyraskis
199 Kifissias Av., Maroussi
151 24 Athens
Greece
(1) 8069808; (1) 8069301

Schlumberger Technology Corp.

+Ralphe Wiggins
*Cengiz Esmersoy
Old Quarry Road
Ridgefield, Connecticut 06877-4108
(203) 431-5000

Seismograph Service Corp.

+Dale Stone
P.O. Box 1590
Tulsa, Oklahoma 74102
(918) 627-3330

Statoil

+Ole E. Naess
Den norske stats oljeselskap a.s.
Postboks 300
N-4001 Stavanger
Norway
(04) 57 70 00

Sun Exploration and Production Co.

+Joong H. Chun
*Charles F. Barron
Technology Center
P.O. Box 830936
Richardson, TX 75083-0936
(214) 470-1912

Sun Microsystems, Inc.

+Catherine W. Gortner
2550 Garcia Avenue
Mountain View, CA 94043
(415) 960-1300

Texaco U.S.A.

+Youngsun Shin
Elmer Eisner
Houston Research Center
P.O. Box 770070
Houston, Texas 77215-0070
(713) 954-6000

**TOTAL (Compagnie Française
des Pétroles)**

+J.J. Raoult
J.P. Gauriat
Cédex No. 47
92069 Paris la Défense
France
33 (1) 42 91 40 00

Unocal Corporation

+Ken Fournier

*W. B. Lee

N. Baba

376 S. Valencia Avenue

P. O. Box 76

Brea, California 92621

(714) 528-7201

U.S. Geological Survey

+Dennis Mann

MS 999

345 Middlefield Road

Menlo Park, California 94025

(415) 354-3174

Western Geophysical

+Ken Larner

*Walt Lynn,

Aftab Alam

P. O. Box 2469

Houston, Texas 77252

(713) 974-3194