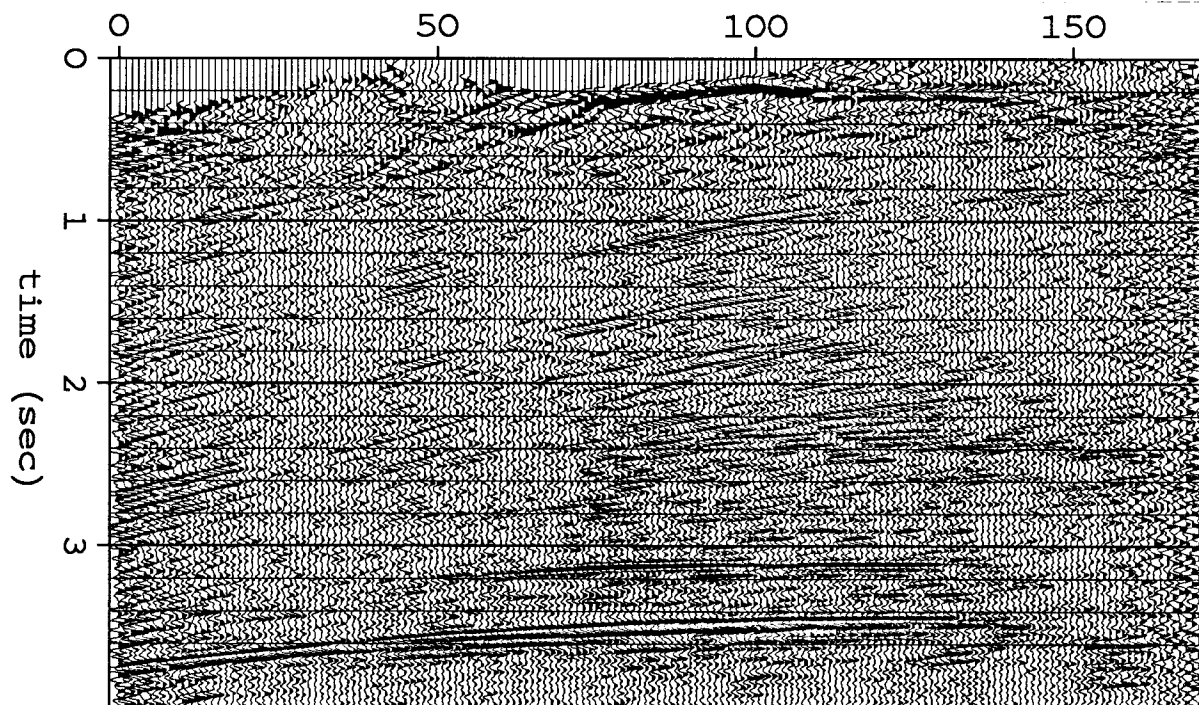


STANFORD EXPLORATION PROJECT

Report Number 41

December 1984

By: Kamal Al-Yahya, Jon Claerbout, Joe Dellinger, Yves Dezard,
Paul Fowler, Bill Harlan, Stew Levin, Li Zhiming, Peter Mora, Francis Muir,
Shuki Ronen, Dan Rothman, Chuck Sword, John Toldi, and Marta Woodward



Copyright © 1984

by the Board of Trustees of the Leland Stanford Junior University

Stanford, California 94305

Copying permitted for all internal purposes of the Sponsors of
the Stanford Exploration Project

SEP-41 --- TABLE OF CONTENTS

Deconvolution

<i>Levin, S.</i> , Surface-consistent deconvolution	1
<i>Claerbout, J.</i> , Deconvolution essays	27
<i>Woodward, M. and Dellinger, J.</i> , Median spectra	35

Statics

<i>Rothman, D.</i> , Residual statics estimation by simulated annealing: field data example	51
<i>Ronen, S.</i> , Statics estimation by stack optimization of noisy data	67

Velocity Estimation

<i>Toldi, J.</i> , Velocity analysis without picking	77
<i>Toldi, J.</i> , Estimation of a near-surface velocity anomaly from stacking velocities	99
<i>Al-Yahya, K. and Muir, F.</i> , Velocity analysis using prestack migration: Applications	121

Dip Moveout

<i>Ronen, S.</i> , One-trace dip move-out	149
<i>Ronen, S.</i> , Stability of finite-differencing DMO	155
<i>Fowler, P.</i> , Velocity stack DMO: an addendum	161

Migration

<i>Li, Z.</i> , Wave field extrapolation by the linearly transformed wave equation operator	167
<i>Levin, S.</i> , Suppressing wraparound in $\omega - x$ migration	191
<i>Levin, S.</i> , Footnote to parallel x-t migration	207
<i>Dezard, Y.</i> , Wave field extrapolation	217

Inversion

<i>Mora, P.</i> , Data space contraction in overdetermined inverse problems	251
<i>Mora, P.</i> , Elastic inversion using ray theory	261
<i>Harlan, W.</i> , Robust inversion of of VSP's.....	283
<i>Rothman, D.</i> , Nonlinear inversion, simulated annealing, and residual statics estimation	297
<i>Rothman, D.</i> , Monte Carlo techniques: an overview.....	327
<i>Al-Yahya, K.</i> , A review of some seismic inversion methods.....	337

Converted Waves and CDR

<i>Sword, C.</i> , Approximating the kinematics of converted waves.....	347
<i>Sword, C.</i> , The method of controlled directional reception	369
<i>Sword, C.</i> , Processing converted-wave data using the method of controlled directional reception.....	395

Statistics

<i>Harlan, W.</i> , Statistical tools for balancing non-stationary processes.....	405
<i>Dellinger, J.</i> , What is the median of {1,2,3,5}?	409

Modeling

<i>Mora, P.</i> , A simple geometric derivation of the ray spreading factor	417
-----------------------------------------------------------------------------------	-----

Errata

<i>Ronen, S.</i> , Erratum/solution to the asymmetric ellipse paradox	427
<i>Harlan, W.</i> , SEP-38 erratum	431
SEP phone directory	432
Research personnel.....	433
Sponsors of the SEP, 1983-84	436