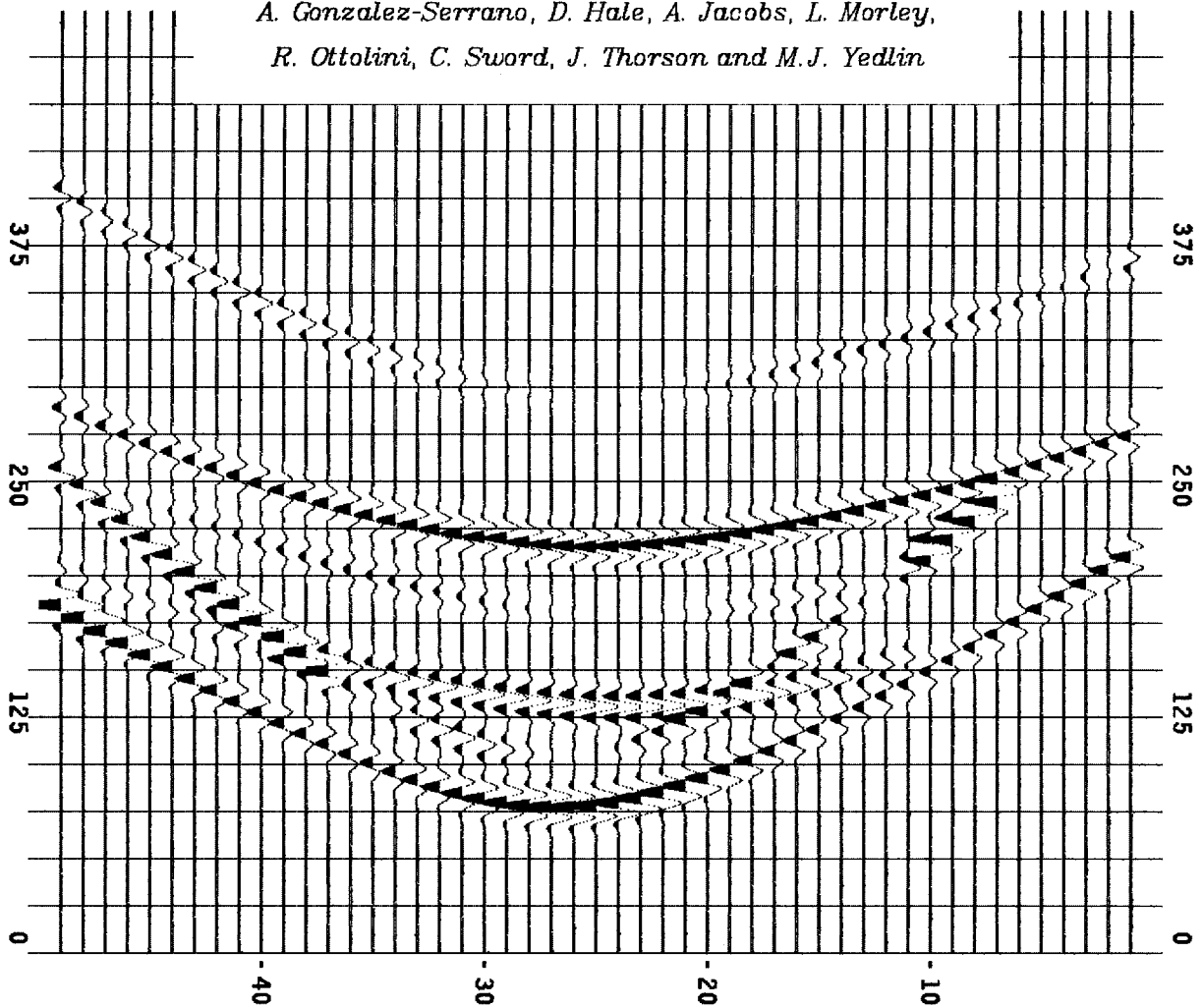


**STANFORD EXPLORATION PROJECT**

Report Number 28

October 1981

*By: T. Bourbie, V. Červený, J. Claerbout,  
A. Gonzalez-Serrano, D. Hale, A. Jacobs, L. Morley,  
R. Ottolini, C. Sword, J. Thorson and M.J. Yedlin*



Copyright © 1981

by the Board of Trustees of the Leland Stanford Junior University

Stanford, California 94305

Copying permitted for all internal purposes of the Sponsors of  
the Stanford Exploration Project

**SEP-28 --- TABLE OF CONTENTS**

**Graphics**

*Claerbout J.F.*, On-Line Movies.....1  
*Ottolini R.*, Color Graphics Terminals at SEP .....5  
*Sword C.*, SEP Goes to the Movies.....11

**Dynamic Ray Tracing**

*Cerveny V.*, Dynamic Ray Tracing in 2-D Media.....21  
*Cerveny V.*, Determination of Second Derivatives of Travel-time  
 Field by Dynamic Ray Tracing.....31  
*Cerveny V.*, Ray Tracing in a Vicinity of a Central Ray.....39  
*Cerveny V.*, Computation of Geometrical Spreading by Dynamic  
 Ray Tracing.....49  
*Cerveny V.*, Dynamic Ray Tracing Across Curved Interfaces .....61  
*Yedlin M.*, Ray Tracing Equations in Three Dimensions.....75  
*Yedlin M.*, Ray Tracing and Lagrangians .....81  
*Yedlin M.*, Differential Geometry and Ray-Centered Coordinates .....85  
*Yedlin M.*, The Wave Equation in Ray-Centered Coordinates .....89

**Beams**

*Claerbout J.F.*, The Simplest Gaussian Beam .....93  
*Claerbout J.F.*, The Gaussian Beam in Energy Variables.....99

**Snell Traces**

*Gonzalez-Serrano A.*, Velocity Analysis by Snell Trace  
 Deformation and Stolt Imaging .....103  
*Ottolini R.*, Migration Before Stack by Transformation  
 Into Snell Trace Coordinates .....121

<i>Ottolini R.</i> , Five Snell Parameter Imaging Methods.....	139
<b>Migration</b>	
<i>Jacobs B.</i> , High Order Migration when $V=V(x,z)$ .....	145
<i>Jacobs B.</i> , Recursions for Migration in Slant Frames .....	161
<i>Jacobs B.</i> , Numerical Error and Migration .....	171
<i>Jacobs B.</i> , An AP Program for Gaussian Elimination of Banded Complex Matrices .....	177
<i>Ottolini R.</i> , Progress Report on Migration and Interpretation of the JAPEX Japan Trench Line .....	189
<b>Attenuation and Q</b>	
<i>Hale D.</i> , Q and Adaptive Prediction Error Filters .....	209
<i>Hale D.</i> , Q and Kalman Filtering.....	233
<i>Bourbie T. and Gonzalez-Serrano A.</i> , Synthetic Seismograms in Viscoelastic Media: I. Theory .....	247
<i>Bourbie T. and Gonzalez-Serrano A.</i> , Synthetic Seismograms in Viscoelastic Media: II. Application.....	263
<b>Multiples</b>	
<i>Morley L.</i> , Seafloor Consistent Pegleg Multiple Attenuation .....	281
<b>Missing Data</b>	
<i>Thorson J.</i> , Extrapolating Nonstationary Traces by Autoregressive Filters .....	291
<i>Thorson J.</i> , Improved Discrimination of Small Events in Stacking by Extrapolation.....	307
<i>Ottolini R.</i> , Velocity Independent Extrapolation Off Wide Offsets of Gathers .....	321
<i>Ottolini R.</i> , Improving the Quality of Slant Stacks by Extrapolating Missing Offsets.....	335
<b>Translations</b>	
<i>Sword C.</i> , The Size of the Region that Forms a Reflected Wave at a Boundary .....	345
<i>Ottolini R.</i> , Translator's Preface to the Chinese Edition of FGDP.....	355
<i>Sword D.</i> , Translator's Preface to the Russian Edition of FGDP.....	357