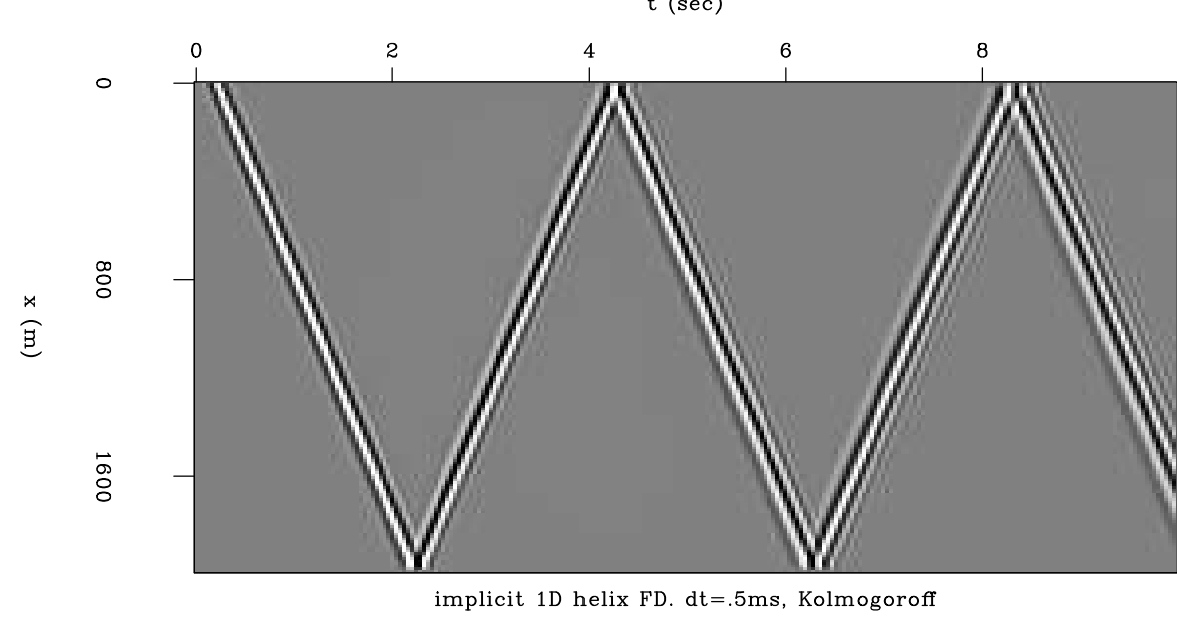
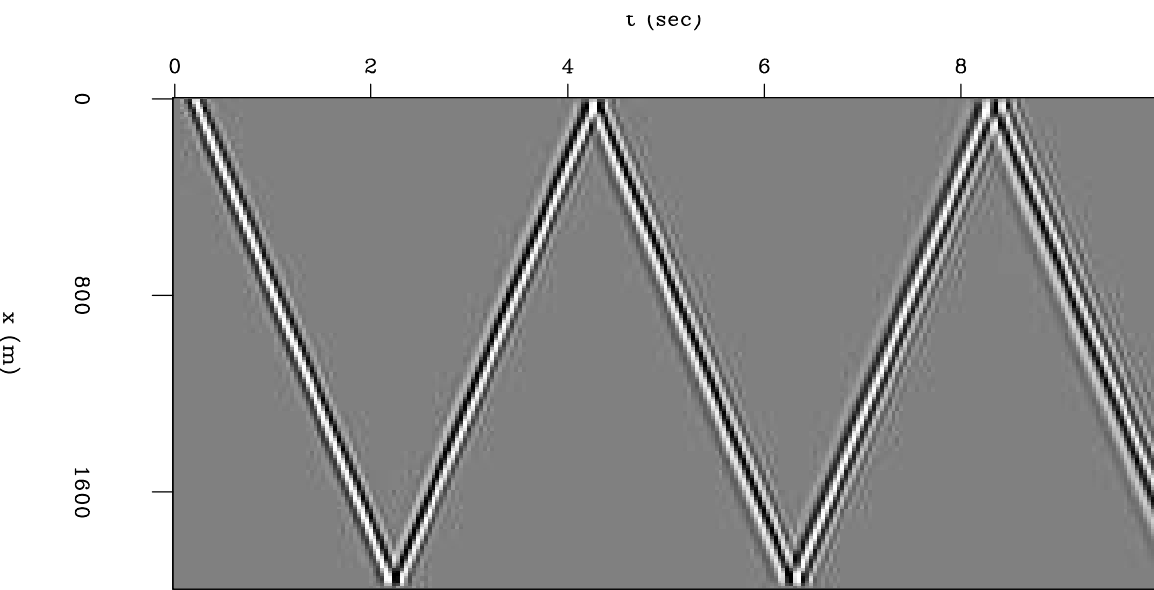


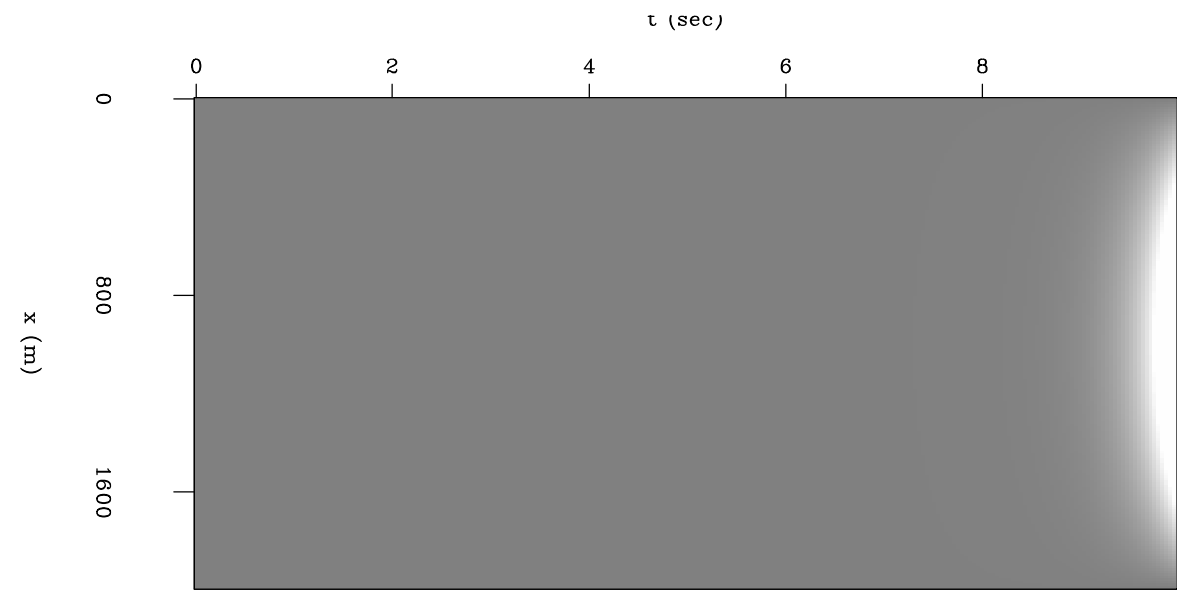
implicit 1D helix FD, dt=.5ms, Wilson



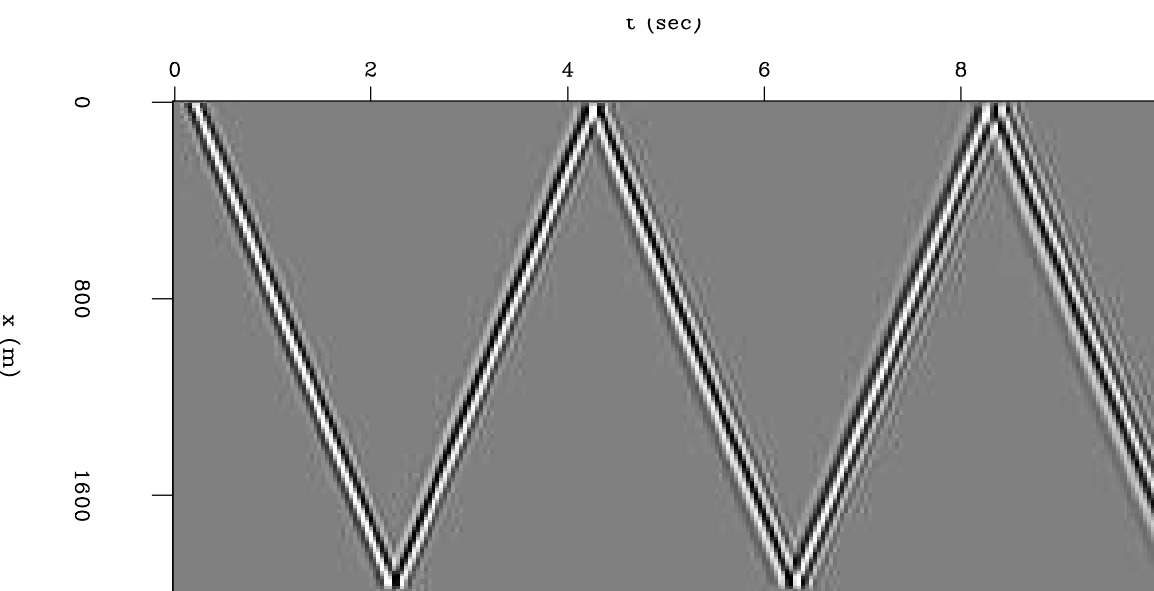
implicit 1D helix FD. dt=.5ms, Kolmogoroff



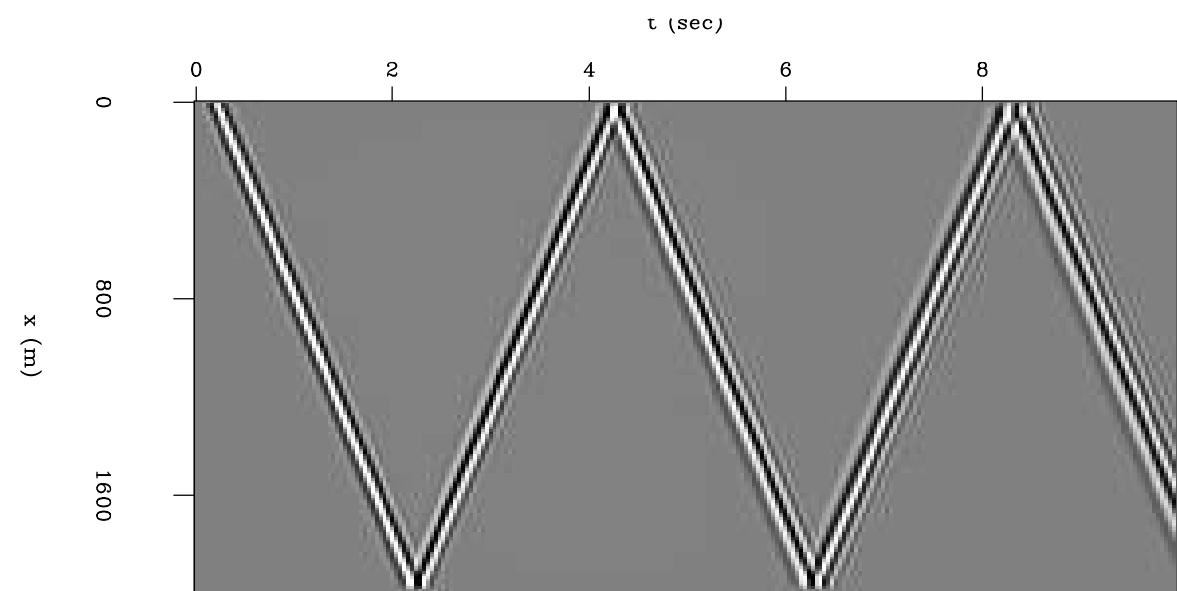
implicit 1D helix FD, dt=1ms, Wilson



implicit 1D helix FD. dt=1ms, Kolmogoroff



implicit 1D helix FD, dt=1ms, Wilson



implicit 1D helix FD. dt=1ms, eps=1e-4, Kolmogoroff