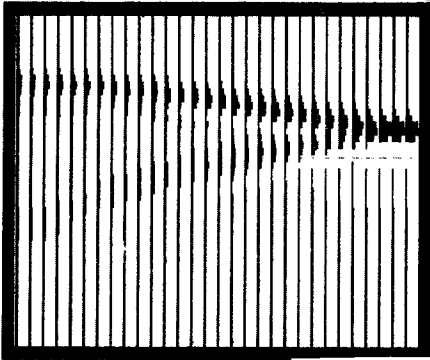
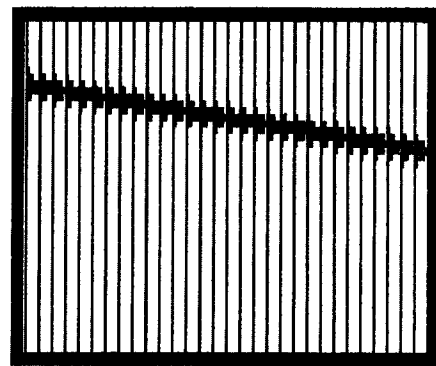
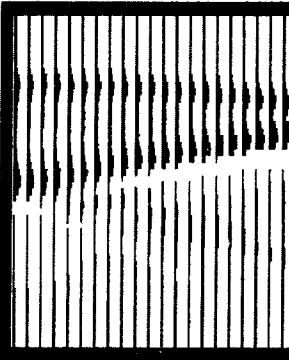
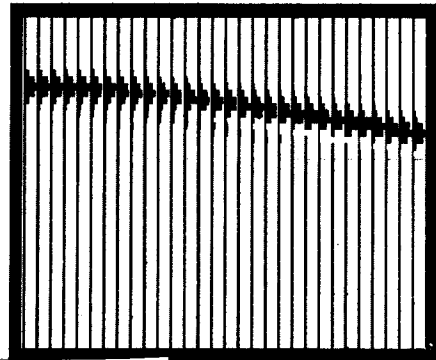


$z = 0$



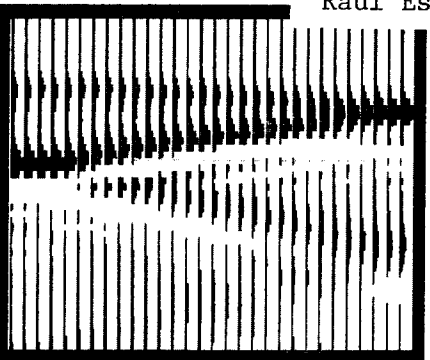
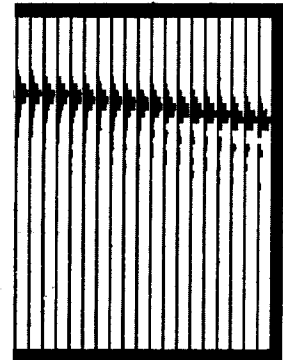
$z = 5$



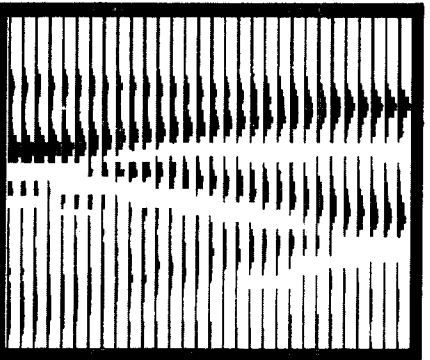
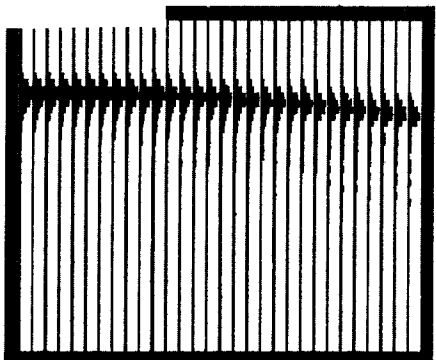
STANFORD EXPLORATION PROJECT
September 1976 Progress Report
SEP Vol. 10

by

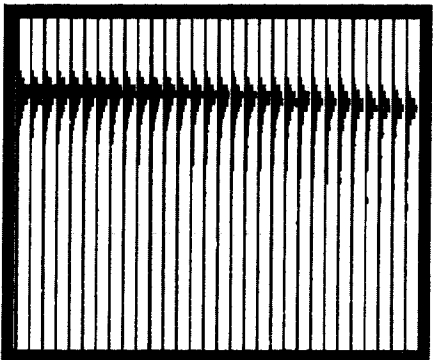
Luis Canales, Robert W. Clayton,
Jon F. Claerbout, Bjorn Engquist,
Raul Estevez



$z = 15$



$z = 20$



Reflecting Sides

Absorbing Sides

Table of Contents SEP-10

Page No.

MIGRATION TECHNIQUES

1	Migration with Short Computer Word Length	Bjorn Engquist
10	Absorptive Side Boundaries for Migration	Jon F. Claerbout
16	Programming Absorptive Side Boundaries for Migration	Robert W. Clayton
30	Absorbing Boundary Conditions for Wave Equations	Bjorn Engquist

SOURCE WAVEFORMS

50	Refined Source Waveform Estimation	Jon F. Claerbout
55	Preliminary Results on Refined Source Waveform Estimation	Raul Estevez
69	A Note on Waveform Estimation	Luis Canales
73	Source Waveform Ambiguity with Surface Reflection Coefficient	Jon F. Claerbout

NON-GAUSSIAN MODELING

76	Non-Gaussian Signal Analysis	Jon F. Claerbout
84	Exponential Tilt Invariant Solution of Overdetermined Convolution Equations	Jon F. Claerbout
90	LEVITY: Levinson Recursion Reprogrammed	Jon F. Claerbout
99	A Quantile Finding Program	Luis Canales
101	Probability and Entropy of Seismic Data	Jon F. Claerbout
109	IIB: Inverse Incomplete Beta Function of One-Half	Jon F. Claerbout
114	Mixed L_1 and L_2 Norm Problems	Luis Canales

ELASTIC WAVES

125	One Way Elastic Wave Equations	Bjorn Engquist
141	Difference Approximations of One Way Waves	Bjorn Engquist Robert W. Clayton
165	A Paraxial Equation for Elastic Waves	Jon F. Claerbout Robert W. Clayton